

## Control Activities

### Delegated controls

- Controls which are performed for the State Agricultural Intervention Fund (SZIF) and the State Office for Nuclear Safety (SÚJB).
- Control of compliance with the minimum requirements under agroenvironmental-climatic measures.
- Supervision of the organic production and following agroenvironmental-climatic measures.

### National controls

- Control of placing on the market, labelling and storage of fertilizers.
- Control of the use of modified sewage sludge on agricultural land.
- Control of the production, import, use and quality of feed additives and premixes.
- Control of registration of feed business operators.
- Control of organic farming.
- Control of production, import and placing on the market of plant protection products, as well as their labelling, packing, storage and distribution, keeping evidence and use of PPP by a qualified person.
- Control of use and functional ability of advice for application of PPP.
- Supervision of establishments for control testing of device for PPP application.

Within the control activities the inspectors take samples of feed, plant protection products, fertilizers, sprinkler fluids, soil, sludges, sediments and plant material.

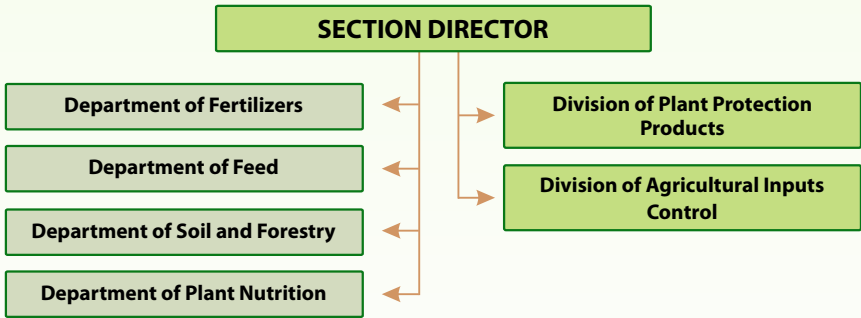


## Plant Protection Products

- Evaluation and authorisation of plant protection products, including parallel trade, auxiliary products and biological agents.
- Evaluation of active ingredients of plant protection products.
- Certification of organisations performing efficacy tests in compliance with the Good Experimental Practice (GEP).
- Give out attitude to application for conceding document which give the rights to do control testing of professional device for PPP application.
- Implementation of the National Action Plan on the sustainable use of plant protection products.
- Prove of qualification for use of PPP (II. and III. degree).
- Keeping statistic of plant protection products which are placed on the market and consumption of activ substances in PPP.



### ORGANIZATION SCHEME Section of Agricultural Inputs (SZV)



[www.ukzuz.cz](http://www.ukzuz.cz)



## CENTRAL INSTITUTE FOR SUPERVISING AND TESTING IN AGRICULTURE SECTION OF AGRICULTURAL INPUTS



**Contact: ÚKZÚZ, Division of Agricultural Inputs Control**  
Hroznová 2  
656 06 Brno

phone: +420 543 548 309  
[pepa.svoboda@ukzuz.cz](mailto:pepa.svoboda@ukzuz.cz)

**Contact: ÚKZÚZ, Division of Plant Protection Products**  
Zemědělská 1752a, 613 00 Brno  
phone: +420 545 110 431  
[pripravky@ukzuz.cz](mailto:pripravky@ukzuz.cz)

**Contact: Section of Agricultural Inputs**  
Hroznová 2, 656 06 Brno  
phone/fax: +420 543 548 330  
[ukzuz@ukzuz.cz](mailto:ukzuz@ukzuz.cz)



## Plant Nutrition

### Agrochemical testing of agricultural soils

- It is a regular determination of selected parameters of soil fertility – pH, available nutrients, content of microelements and in specific cases other parameters.
- It is carried out in a six-year period.
- It includes soil sampling, chemical analyses and the assessment of results.

### Field and pot experiments

- **Long-term field experiments**
  - Results of the trials are an important information source for the legislation and agricultural supervision.
  - The effects of various ways and intensities of fertilization on yields and production quality are studied.
- **Short-term field experiments**
  - Are used for the process of registration of fertilizers, organic materials and auxiliary substances, for the verification of influence of different doses on yield of crops, quality of products and soil properties.
- **Pot experiments**
  - Are used for the process of registration of non-type fertilizers.
- **Field lysimeters**
  - In long-term period the translocation of nutrients, particularly nitrogen, is studied and its balance in the different climatic and soil conditions.



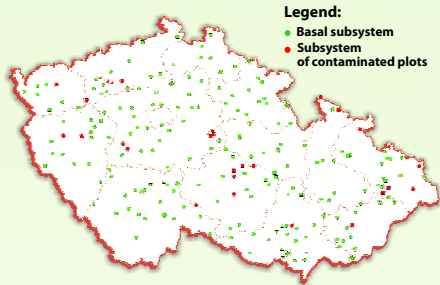
### Placing fertilizers on the market

- Registration, notification, mutual recognition of fertilizers and supplementary substances and filing of EC FERTILIZERS.
- Administration of Registry of Fertilizers.

## Soil Safety

### Monitoring of agricultural soils

- Observation of the state and dynamics of soil properties on stable, exactly defined and representative plots.
- Set up in 1992.
- 214 monitoring plots.
- Monitoring includes monitoring of organic and also inorganic soil contamination, agrochemical and physical parameters and also contents of elements and organic substances in crops.



**Monitoring of the sewage sludge quality** – quality monitoring of those sewage sludges, which are supposed to be applied on agricultural soil; since 1998.

**Monitoring of river and lake sediments** – monitoring of the quality of sediments from the point of view of their use on agricultural soil; since 1995.

**Registry of heavy metals contents in agricultural soils** – a database which characterises risk elements contamination level in agricultural soil; since 1992.

## Forestry

### Soil properties survey on forest land

- Developing projects of rehabilitation measures in forests.
- Taking of soil samples and samples of assimilatory organs and their chemical analysis.
- The territorial units where the system of sampling points has been established are Natural Forest Regions (NFR).

### Other activities

- Inspection of efficacy and quality of aerial liming.
- Study of heavy metal pollution and pesticide residue pollution at selected locations.
- Testing of trees for forestation of agricultural land and for ligniculture creation.



## Feed

### Approval or registration of feed business establishments

- Processing of applications of feed business operators for approval or registration in the Czech Republic.
- Administration of national registry of feed producers, importers, suppliers, distributors and primary producers.

### Processing of applications and issuing of Qualification Certificates

- For import, placing on the market and manufacturing of feed.

### Administration of Rapid Alert System for Food and Feed (RASFF) for feed

- Cooperation with National Contact Point.

### Biological testing

- Biological testing of feed, premixes and supplementary substances.
- Cooperation with universities, research institutions and companies in the field of biological testing.



## Control Activities

- **Cross Compliance controls**
- Monitoring of the compliance management in vulnerable areas.
- Control of standards for good agricultural and agroenvironmental condition.
- Control of feed safety and suppression of BSE.
- Control of obligatory requirements in use of plant protection roducts (PPP).

